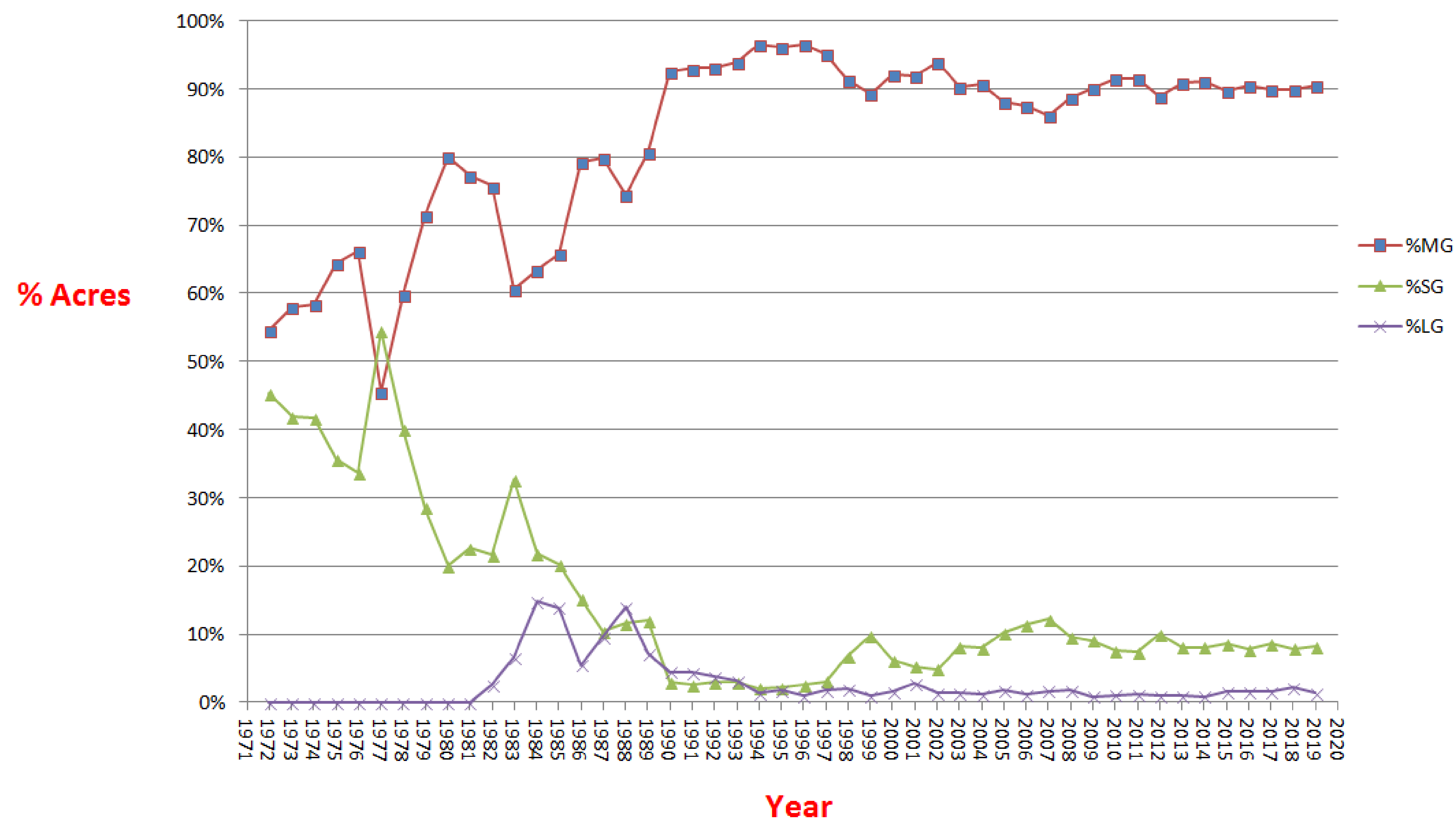




RES Rice Varieties: Trend and Acreage

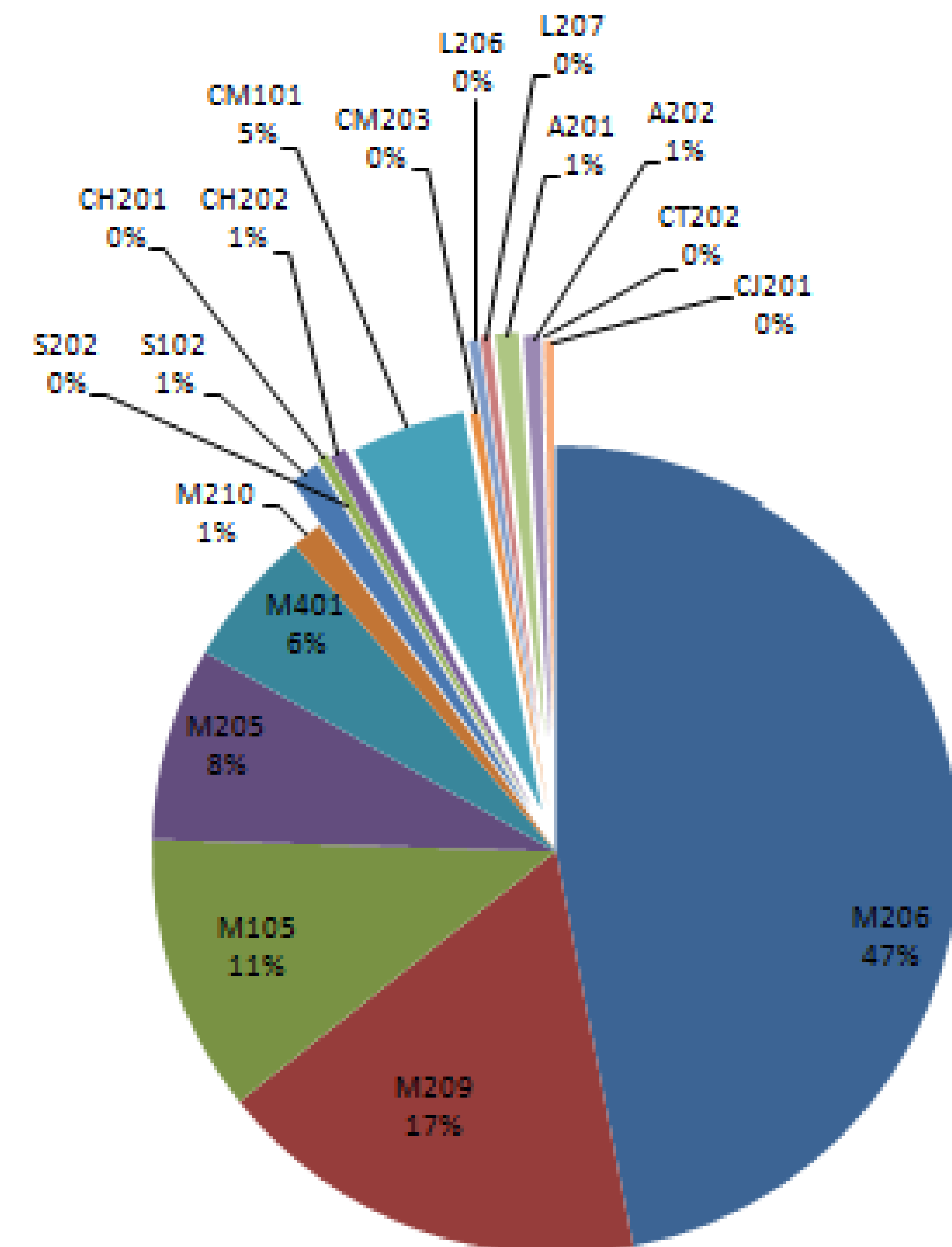
Trend in California Acreage of Medium, Short and Long Grain Varieties Released by RES from 1971 to 2019



VARIETY	% ACREAGE	% Grain Type
M206	46.6%	89.4%
M209	17.3%	
M105	11.0%	
M205	7.7%	
M401	5.5%	
M210	1.3%	
S102	1.2%	7.2%
S202	0.0%	
CH201	0.4%	
CH202	0.7%	
CM101	4.5%	
CM203	0.4%	
L206	0.4%	2.8%
L207	0.4%	
A201	0.9%	
A202	0.7%	
CT202	0.0%	
CJ201	0.4%	

Estimates based on Foundation/Registered/Certified seed acreage in 2018

Estimated %Acreage in 2019



Comparison of New Varieties vs. Popular RES Varieties

New Varieties	Grain Yield (CWT/A)		Days to Heading		Plant Height (cm)		Popular Varieties
	2-year Average (2017-18)	compared to check	2-year Average (2017-18)	compared to check	2-year Average (2017-18)	compared to check	
M-105	89	5% more yield	79	2 days later	99	4 cm taller	M-104
M-209	89	3% more yield	88	2 days later	98	1 cm taller	M-205
M-210	89	yields the same	82	no difference	99	1 cm shorter	M-206
S-202	98	17% more yield	83	3 days later	95	3 cm shorter	S-102
CH-202	84	6% more yield	83	3 days early	92	5 cm shorter	CH-201
CM-203	94	25% more yield	82	2 days later	100	7 cm taller	CM-101
L-207	97	11% more yield	84	2 days later	106	12 cm taller	L-206
CJ-201	92	7% more yield	88	3 days later	94	7 cm shorter	A-202

Visit us at:
WWW.CRRF.ORG